

ECO 3 EXPERT

Black & White with Power Doppler,
Stunningly Good.



WWW.CHISON.COM

CHISON
Value Beyond Imaging



Advanced Imaging Technologies

ECHO

- Advanced technologies:
 - i-Image(Intelligent image optimization)
 - THI(Tissue Harmonic Image)
 - SRA(Speckle Reduction Algorithm)
 - Compound imaging
- Full digital beam-former
- Trapezoid
- Automatic PW trace
- Chroma
- Full screen display mode
- AIO(Automatic image optimization)



Ergonomics

- Rotatable LED (0~30°): tailor to different viewing angles
- Ultra-compact & Ultra-light
- Easy to carry
- Keyboard: For easy and quick access
- Dedicated cart TR 9000
- Streamlined workflow

Economic

- The latest platform & more advanced chip-set: brings you better image quality and features at less cost in a more compact box
- Support PC printer, reduce investment & day to day paper cost
- 8G memory card
- 500G hard disk (option)
- Vehicular Charging

ECO-friendly

- Less radiation
- Less power consumption
- Longer usage life:LED
- Longer battery standby time:>2 hours



Ultra-compact



Carrying (BG-100)



Dual probe-connectors

- Full Screen display mode

Excellent PW resolution and automatic PW trace measurement will greatly improve the diagnosis confidence by delivering both qualitative & quantitative information.

Streamlined workflow, Easy diagnosis!

ONLY **6** STEPS!!



1. ONE KEY to select the desired application with automatic preset



2. ONE KEY to optimize the image automatically.
AIO(Automatic image optimization)



3. ONE KEY to save still image and cine



4. ONE KEY to measure



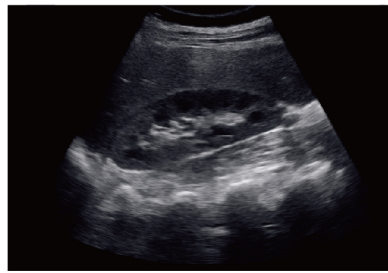
5. ONE KEY to generate report



6. ONE KEY to print by PC or video printer (see page 4 option)



Liver,B Mode



Kidney,B Mode



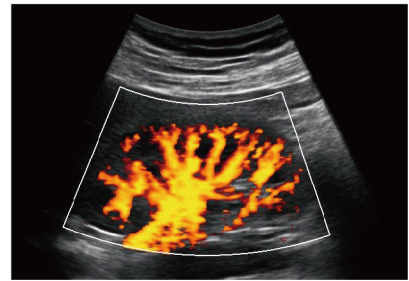
fetal harnpan,B Mode



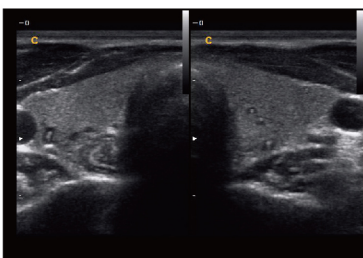
Fetal spine,B Mode



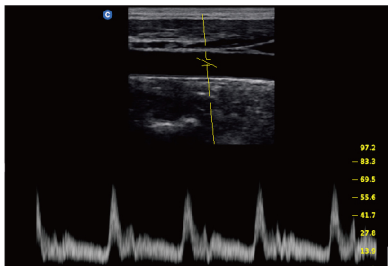
Uterus,B Mode



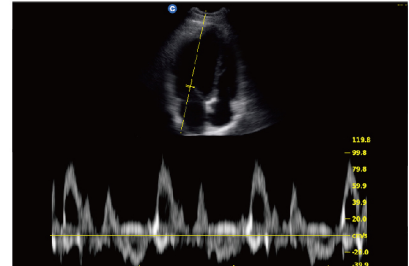
CPA



Thyroid,2B Mode



Carotid,PW Mode



Cardiac,PW Mode

Specification

Applications	Abdomen, OB/GYN, Vascular, Small parts(breast, testes, thyroid), Musculoskeletal Conventional & Superficial, Pediatric, Basic Cardiac
Imaging technologies	i-Image, SRA, Compound imaging, THI
Display Modes	B, B/B, 4B, M, B/M, PW, CPA, DPD
Gray Scale	256 Levels
Probe Frequency	2.5 MHz-11.0 MHz (Depend on the probe)
Cine Loop	256 frames
Zoom	PIP zoom & pan zoom
Software Packages	Dedicated measurement package: General, OB/GYN, URO, Cardiac, vascular, small parts
Archives Management	Patient information management, images record, exam report
Power Supply	AC 100V-240V, 50Hz-60Hz
Option	DICOM 3.0, Water-proof keyboard cover, Carrying Case (BG-100), Cart TR 9000 Support PC Printer*, Video Printer



2.5MHz-5.0MHz Convex
C3-A



5.3MHz-10.0MHz Linear
L7M-A



5.3MHz-11.0MHz Linear
L7S-A



2.5MHz-5.0MHz Micro-Convex
MC3-A



4.5MHz-8.0MHz Transvaginal
V6-A



4.5MHz-8.0MHz Micro-Convex
MC6-A



5.0MHz-10.0MHz Trans-Rectal
R7-A

CHISON Medical Technologies Co., Ltd.

Sales & Service Contact Address: No.3, Xinwu District, Wuxi, Jiangsu, China 214115

TEL : 0086-510-85310937 **FAX :** 0086-510-85310726 **EMAIL :** export@chison.com.cn

We reserve the right to make changes to this catalogue without prior notice. All rights reserved.

Please contact our local dealer for the latest information.