

CHISON
Value Beyond Imaging



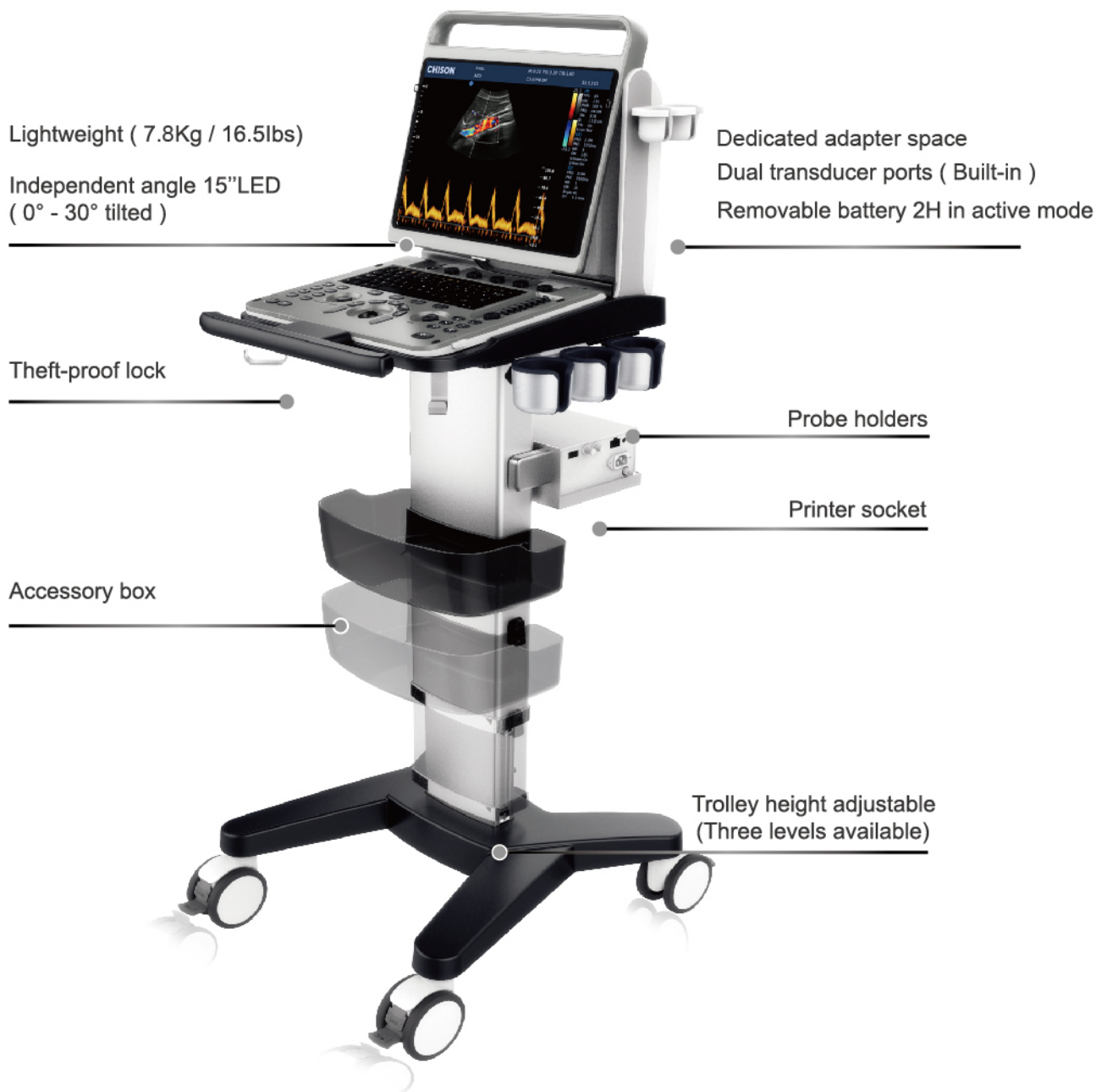
EBit 20

Streamline Your Daily Practice



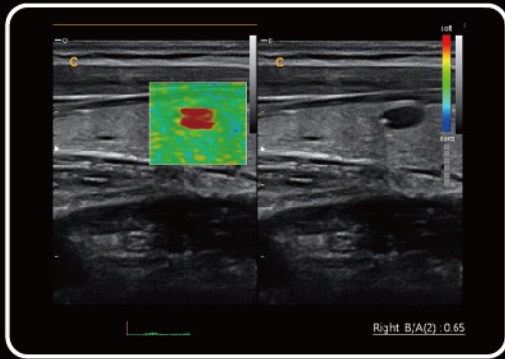
Ergonomic Design

I need a portable,light-weight ultrasound which is easy to go,
easy to diagnose,easy to operate with sufficient measurement
packages.



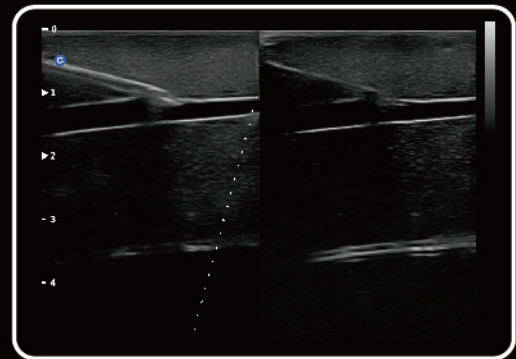
Elastography

- Elastography displays tissue stiffness in real time to provide doctors with additional diagnostic information when scanning organs like liver and breast.



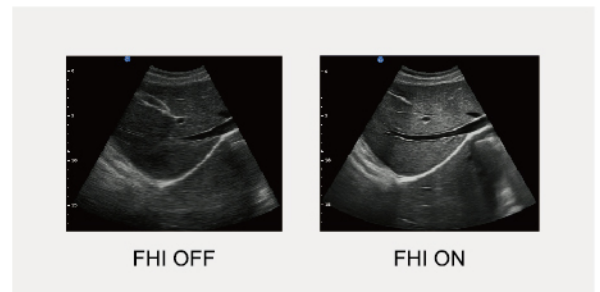
Super Needle

- With Super Needle, clinicians can see needle inside tissue more clearly during medical procedures. Needle angle is up to $\pm 30^\circ$



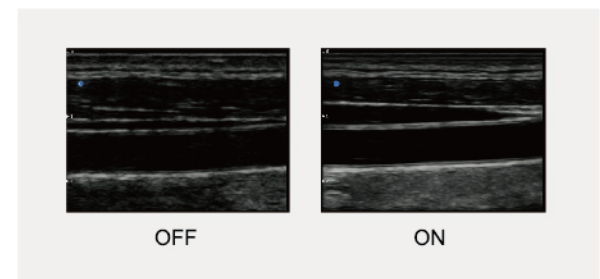
FHI

- FHI is an innovative harmonic imaging technology that uses multiple transmission and receiving methods based on the patients' size and weight. This allows the EBit to maintain image resolution when imaging larger patients.
- Better than traditional THI and phased harmonic which compromise the penetration.
- Chison's FHI technology greatly improves diagnostic abilities and clinical confidence in larger, difficult-to-image patients.



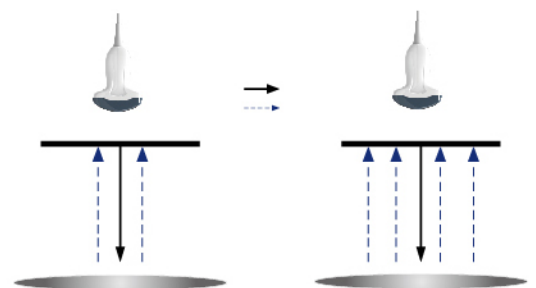
Q-image

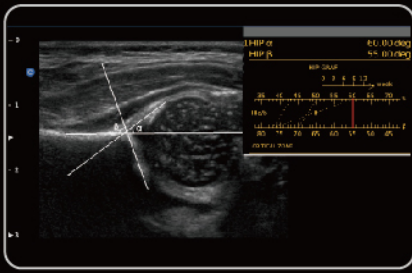
- These innovative algorithms have strengthened the image enhancement results significantly.
- Advanced chipset is used to ensure fast frame rate.



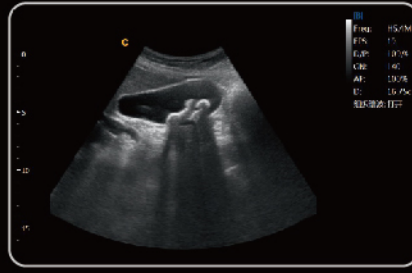
Q-beam

- Compared to the traditional dual-beam former on most ultrasound machines, the EBit 20 uses quad-beam technology for ultrasound signal receiving.
- Doubles the volume of signals received from traditional methods, increasing image resolution and generating more accurate images.
- Produces higher frame rates, ensuring better diagnostic confidence and efficiency, especially for moving organs.

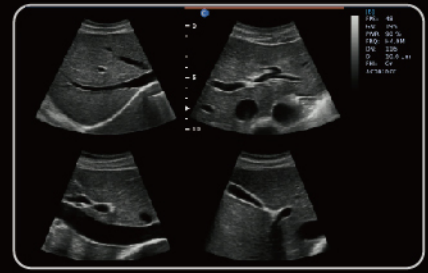




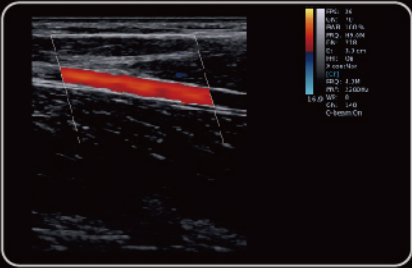
HIP Graf



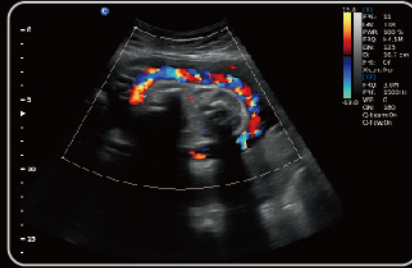
Gallbladder stone, B Mode



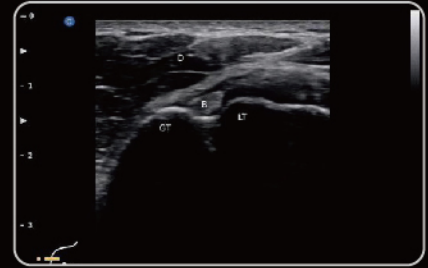
Abdomen, 4B Mode



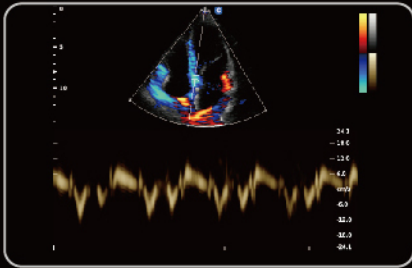
Ulnar artery, C mode



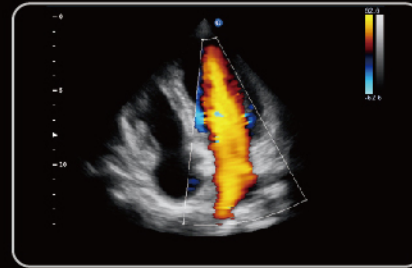
Umbilical cord, C Mode



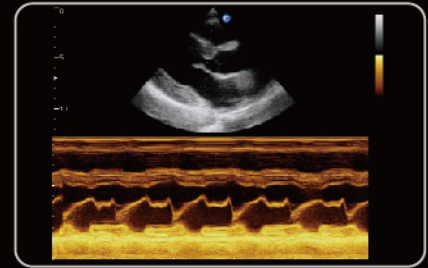
Shoulder MSK, B Mode



Four Chambers View, TDI Mode



Four Chambers View, C Mode



LV Long Axis, M Mode



2.0 - 6.8 MHz
Convex C3-E



4.0 - 15.0 MHz
Linear L7-E



7.0 - 18.0 MHz(With FHI)
Linear L12-E



4.0 - 12.0 MHz
Transvaginal V6-E



4.0 - 15.0 MHz
Transvaginal V7-E



1.5-5.3MHz
Phased Array P3-E



4.0-15.0MHz
Trans-Rectal L7R-E



2.0 - 6.8 MHz
Micro-Convex MC3-E



4.0 - 12.0 MHz
Micro-Convex MC6-E



4.0-10.7MHz
Micro-Convex MC5-E

CHISON Medical Technologies Co., Ltd.

Sales & Service Contact Address: No.3, Changjiang South Road, Xinwu District, Wuxi, Jiangsu, China 214028

TEL : 0086-510-85310937 FAX : 0086-510-85310726 EMAIL : export@chison.com.cn

We reserve the right to make changes to this catalogue without prior notice. All rights reserved.
Please contact our local dealer for the latest information.